



Patel Pride

Some thing for every one on every leaf...!

A prestigious project launched by "**Patel Builders**" after most successfully completing their immensely popular township "**Patel Planet**" which was a milestone in the history of Aurangabad.



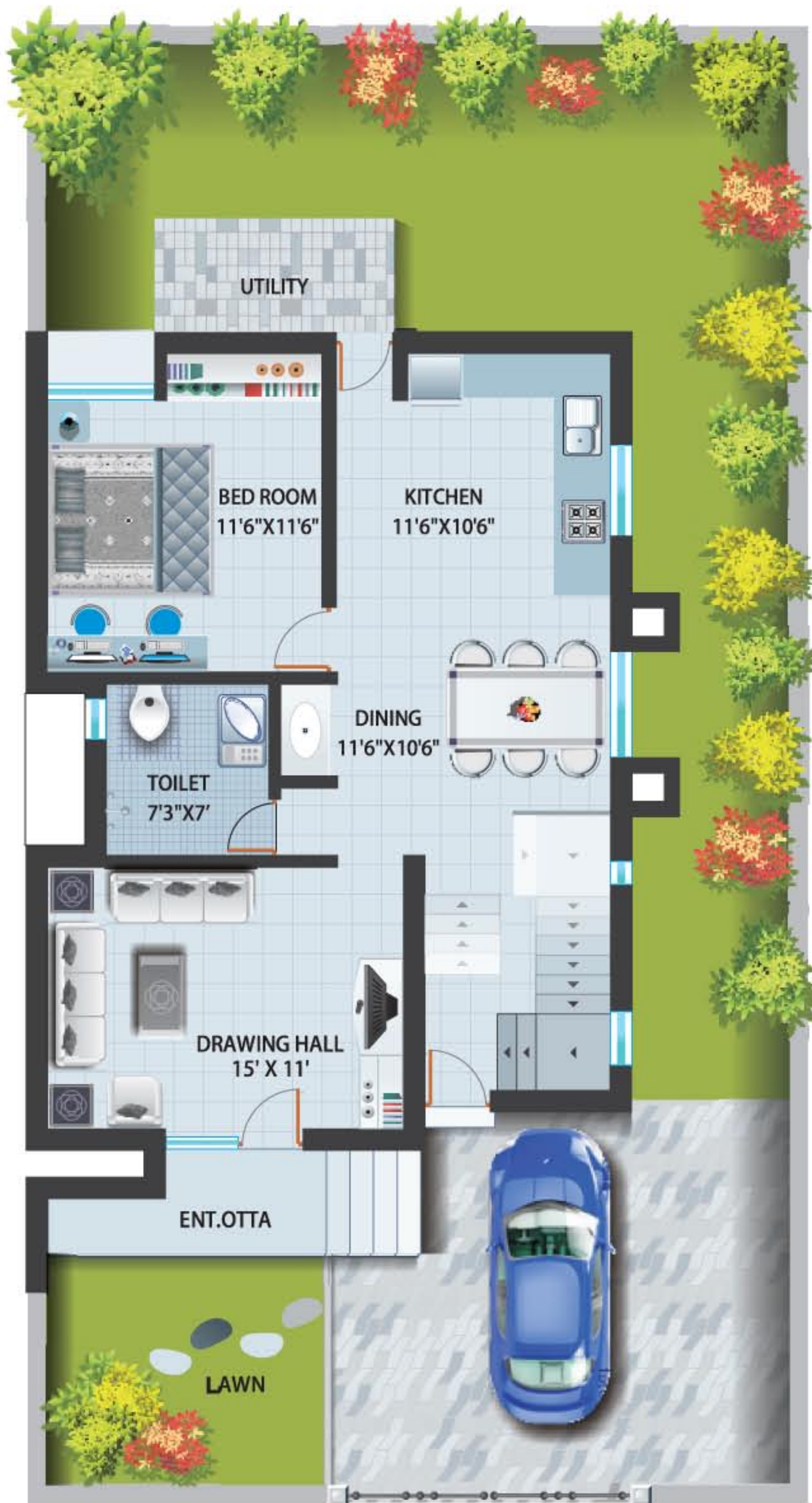


Specifications

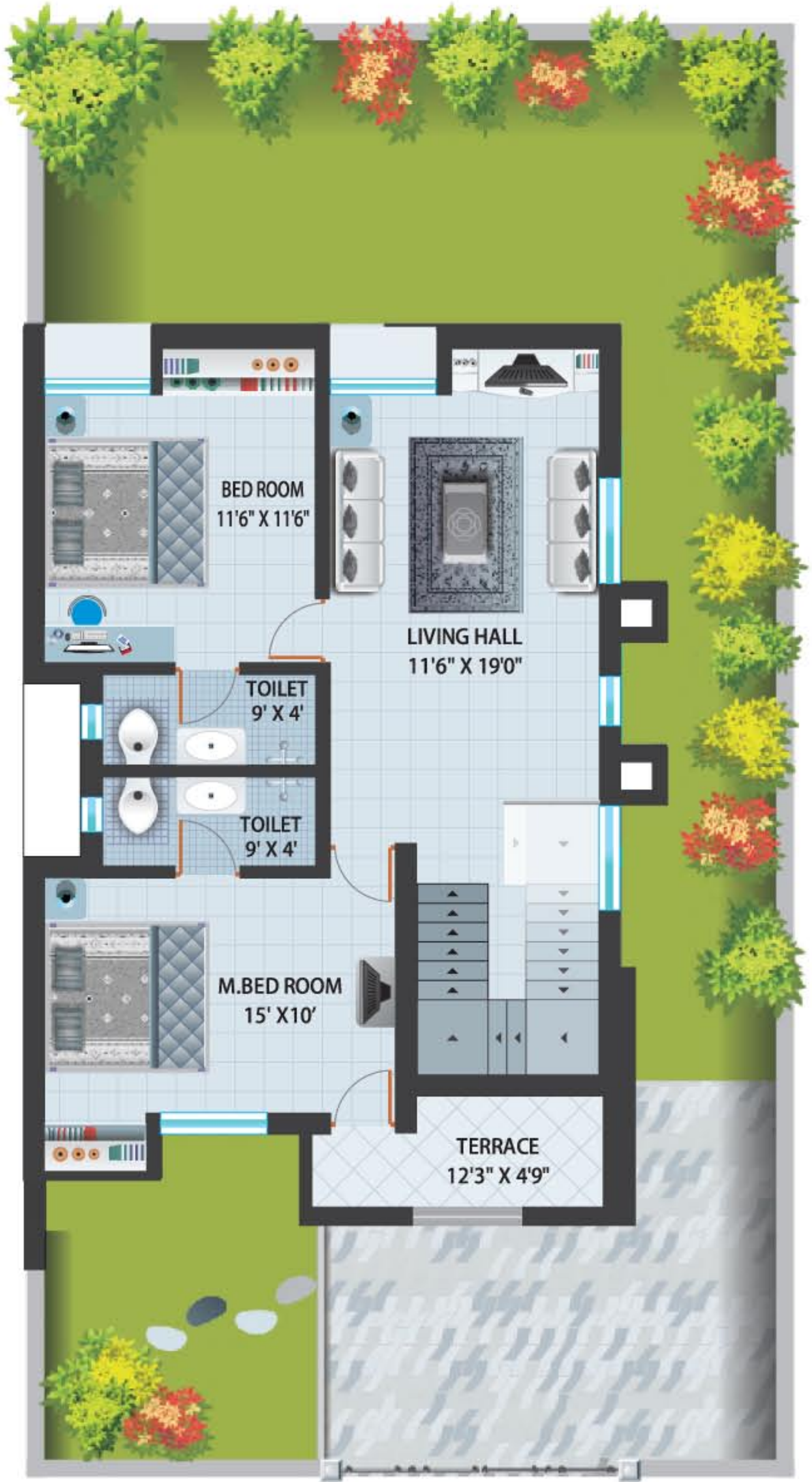
Structure	<ul style="list-style-type: none">• First Class R.C.C. Framed structure with brick masonry walls
Plaster	<ul style="list-style-type: none">• External walls in sand faced plaster and internal walls with neeru finish
Flooring	<ul style="list-style-type: none">• Vitrified/Porceleno tile flooring with skirting in all rooms• Anti- skid flooring tiles in Utilities, toilets and terraces
Toilet Fitting & Accessories	<ul style="list-style-type: none">• Concealed plumbing with Premium quality cp Fittings.• White Sanitary ware• Provision for geyser & exhaust• Glazed dado tile upto lintel level• Hot & Cold Water Mixing Unit in all Bathrooms.
Kitchen	<ul style="list-style-type: none">• Granite top with stainless steel sink• Glazed dado tiles upto lintel level• Provision for water purifier & exhaust
Doors and Windows	<ul style="list-style-type: none">• Attractive main door finished with melamine polish• Flush shutter for all doors• One side PVI Coated flush shutter for toilets• Powder coated Aluminium Windows with Mosquito Meshes• Marble Seal & M.S. Safety Grills for windows
Electrical	<ul style="list-style-type: none">• Concealed copper wiring• Modular switches with sufficient point.• TV & Telephone point in living room• Provision for Inverter point in all room
Painting & Polishing	<ul style="list-style-type: none">• Interior oil bound distemper• External exterior emulsion paint• Oil paint for grill and Door shutters
Staircase	<ul style="list-style-type: none">• Trade of marble and riser of Porceleno• Designer M.S. Railing
Parking	<ul style="list-style-type: none">• Adequate covered car parking

Common Amenities

- Beautifully designed and illuminated Township
- Beautifully Landscaped Gardens
- Elegant compound wall with attractive entrance gate
- Children's Play Area along with play equipments
- Privacy from one block to another
- Power backup for lift in High Rise Tower
- Round the clock security
- Masjid
- Water pump
- Super market
- Wide Roads
- Street Lights
- Land Scape Pockets
- Spacious car parking



GROUND FLOOR PLAN

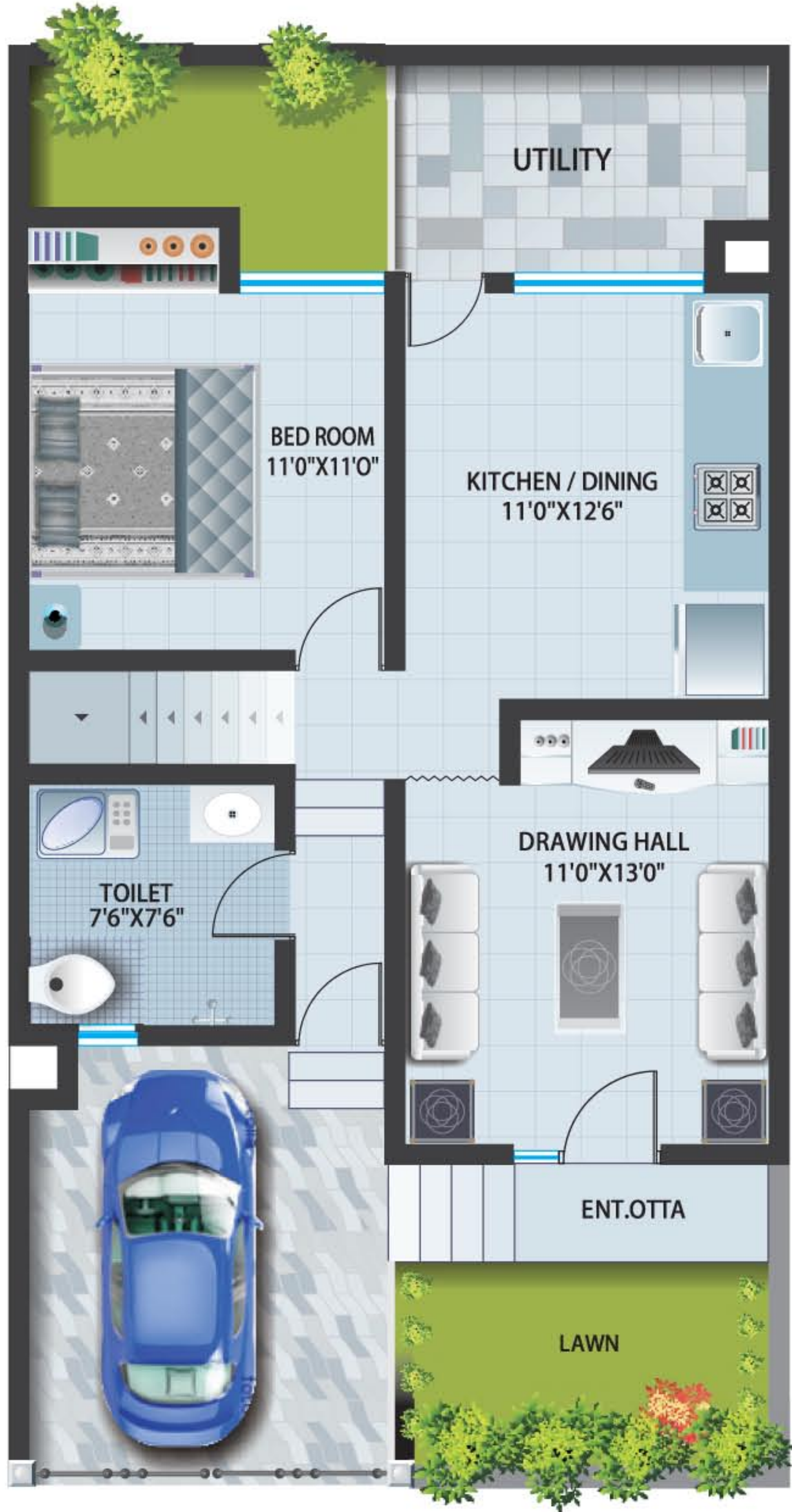


FIRST FLOOR PLAN

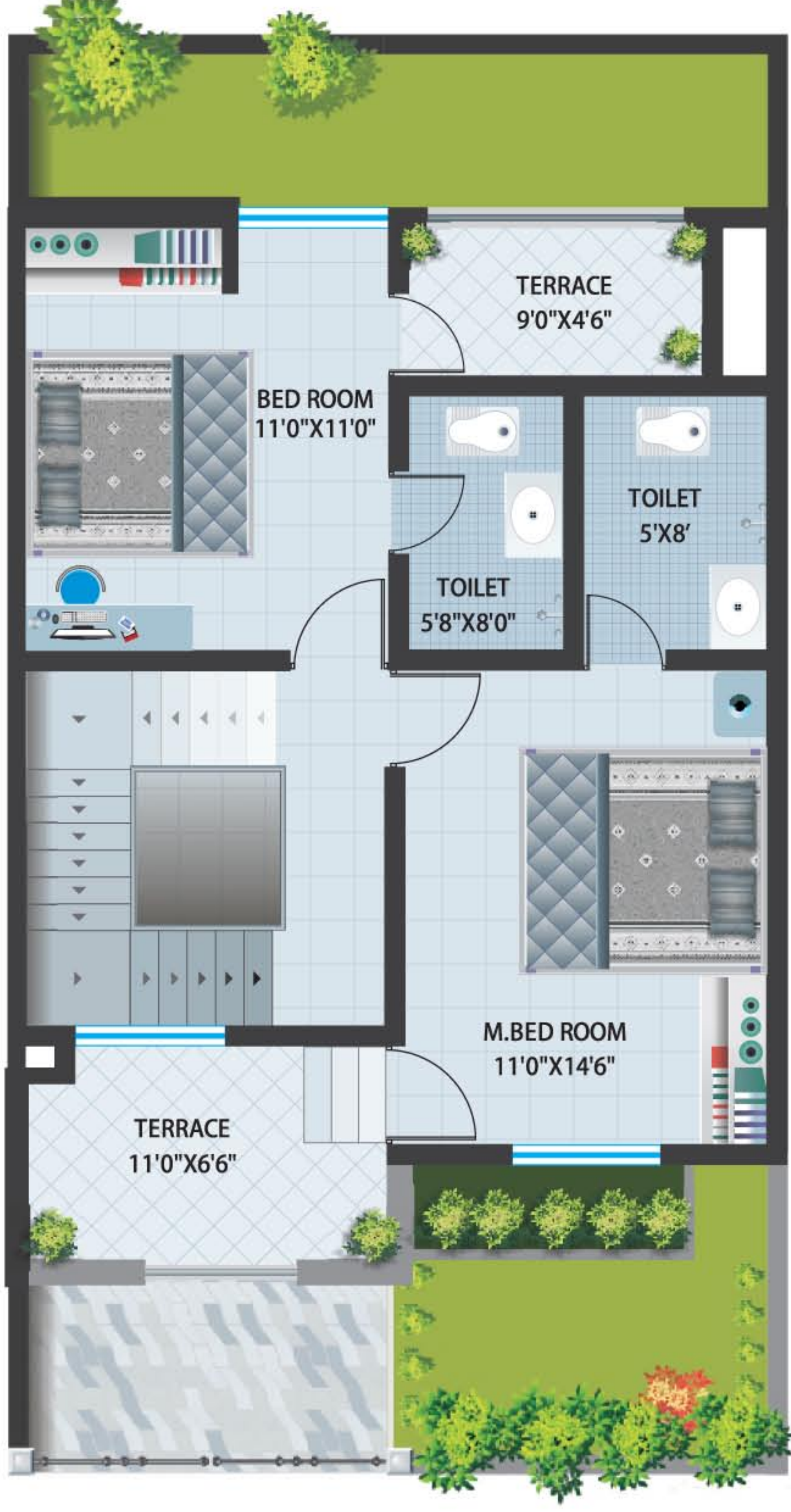
**TWIN BUNGALOWS
THREE BED ROOM HALL KITCHEN DINING LIVING**



APARTMENTS
TWO BED ROOM HALL KITCHEN DINING



GROUND FLOOR PLAN



FIRST FLOOR PLAN

**ROW HOUSES
THREE BED ROOM HALL KITCHEN**

SITE LOCATION PLAN

Patel Pride



A PROJECT BY



SITE AT : GUT NO. 24, BANEWADI, NEAR RAILWAY STATION FLYOVER, AURANGABAD

Office : F-1, Patel Planet, Jatwada Road, N-13, Aurangabad - 431001 (MS) INDIA

Tel.: 0240 - 2381792, 9890786688, 9158786688, 9011786688

E-mail : info@patelbuilder.com, wajeed@patelbuilder.com

www.patelbuilder.com

* The contents of this brochure are purely conceptual and have no binding, Developers reserve the right to amend the layout, plans, number of flats, elevation, colour scheme, specifications and amenities etc.